

2025 GENERAL INFORMATION

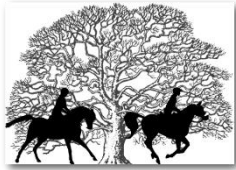
12-Mile Intro Riders

*****Please print any and all documents at home before you leave for the Cache Creek Ridge Ride. When you arrive at camp, the only items we will give to you are your rider card, your rider wristband, and your windshield card displaying your name and number should we need to find you.*****

Table of Contents:

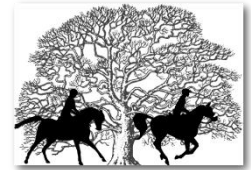
This Page is Page 1	Page 1
Schedule	Page 2
Virtual Ride Meeting	Page 3
Intro Ride Check-In Process	Page 4
Registration Verification	Page 5
Camping Process	Page 6
Base Camp Map	Page 7
Cowboy Wisdom & Rules	Page 8
Driving Directions to Base Camp	Page 9
Pre-Ride Vet -In Process	Page 10
Pre-Ride Vet-In Layout Map	Page 11
Intro Ride Post-Ride Process	Page 12
Finish (Cowboy Camp) Vet Check Layout	Page 13
Intro Ride Course Map	Page 14





12-Mile Intro Ride

SCHEDULE



Friday:

Registration: 9 am - 6 pm (if you plan to stay overnight in camp for your 10:00 am start on Saturday)

Vet In Begins: 2 pm until dark.

Potluck Social: 6:00 pm at Ride Mgt HQ

Virtual Ride Meeting: Wednesday, April 30, 2025 @ 6:00 pm
Link will be posted on our website: cachecreekridgeride.com

Saturday Start Times:

50 milers start at 6:30 am

25-mile Long Course Ride & Tie start at 7:00 am

25 milers start at 7:30 am

12-mile Short Course Ride & Tie start at 9:30 am

Intro Riders start at 10 am (vet in from 9-9:30 am)

Awards:

Intro Riders: Pick up award at Mgt Trailer after you pass the post ride exam. Your “validated” wristband is your “ticket” for an award.

Dinner Service in Management Area

Saturday: 2:30-6:30

Riders: turn in your completed Evaluation Form for Service

Volunteers: turn in your wristband for service

Tickets for purchase on site @ \$25 each for others

Virtual Ride Meeting

Join the meeting Live:

Wednesday, April 30, 2025, 6:00 pm

Link can be found on our website: cachecreekridgeride.com
If you miss the meeting, you can see the recording on Facebook:
Cache Creek Endurance Ride

We have written down most of what you need to know and posted it on our website (if you've gotten this far, you know all this). It is important for you to attend our virtual ride meeting for 4 reasons:

1. You may read the packet, and we hope you do, but remembering written material can be sketchy. Thus, a second presentation is being done verbally and visually with explanations.
2. We may have updates to share closer to the ride, and this is our last chance to inform you of them before we leave home and are out of cell service.
3. The WEATHER will be more predictable this close to the ride, and that can change protocols at vet checks, so we wanted to check in with you so you can prepare properly.
4. You may have questions for us, and this meeting offers an opportunity to address your questions and concerns.

We have worked hard to capture a ride meeting in this written packet. The Management Team hosting the CCRR are experienced limited distance and endurance competitors. We know that it helps you to have as much information in advance of the Ride as we can provide. This packet will help you prepare, but the Virtual Meeting on Wednesday, April 30th, should also be considered required viewing for updates. See you soon AND thanks for joining us at the CCRR!



Intro Rider Check in Process

Friday, May 2, 9 am - 6 pm



For Intro Riders arriving on Saturday (May 3), registration is from 7:00 am to 9:30 am at the Management Office at the south end of camp

- If you are arriving on Friday and camping overnight, stop at the check-in table at the pop-up tent on the landing before dropping down into base camp.
- The following steps apply either way:
 1. Jennifer will look you up on her rider or volunteer list. This list was generated from the JOT on-line entry and/or volunteer forms.
 2. We will verify all your registration information for accuracy. If you have decided to change to a different horse or mule, we will correct our database before sending you to the vet area for a preride vet exam and numbering your horse.
 3. If you are a “late entrant” and did not register online, we will ask you to complete a paper entry form. This will take extra time, but we will register you while you wait. You will need to pay regular and late fees in order to proceed to camping.
 4. Up-to-date rider lists are posted on our website *cachecreekridgeride.com*. Please verify information in our database by looking yourself up on the Rider List prior to arriving at check in.
 5. We will also give you a windshield card with your name and rider number on it. We ask that you display the card in the windshield of your vehicle in case we need to find you and your camp spot.
 6. You will also be given an evaluation form at check-in which you will complete and turn in for your Saturday sandwich or meal (your choice). Granzella’s deli sandwiches are available at 11 am. The dinner starts at 2:30 and is served until 6:30.
 7. You will also be given a wristband which you will wear during your ride and (once verified by the post ride veterinarian) serves as your award ticket.
- Dinner tickets will be available for purchase at Rider Check-in. Please bring cash or check for payment of \$25/dinner. Each rider entry includes one dinner, but if you have people with you who would like to have dinner after the ride, please take this opportunity to purchase a ticket for additional dinners.

Registration Verification

- ☺ Meet Ride Managers Pam Stalley and Jennifer Stalley Crenshaw, who will check you into the ride. First, we will check in Riders, then Volunteers who may be in your vehicle.

RIDERS:

1. Please be ready to verify your **horse information** so our records are accurate. Tell us if you have a horse change. If you are changing mounts, be prepared to provide the information on your new horse. We will create a new vet card and give it to you to take to the preride exam in base camp. We will also give you a windshield card for your windshield in case we need to find you.
2. Also please verify your **ride distance**. If you want to change distances, it's ok, but it will cause a rider number change. We will create a new vet card for you, give it to you, and update our computer database.
3. If you have no changes, we will write your rider # on your wristband, hand you your rider card, and windshield card*. *We ask that you place your windshield card in your front windshield, so we can identify your rig should we need to find you.

VOLUNTEERS

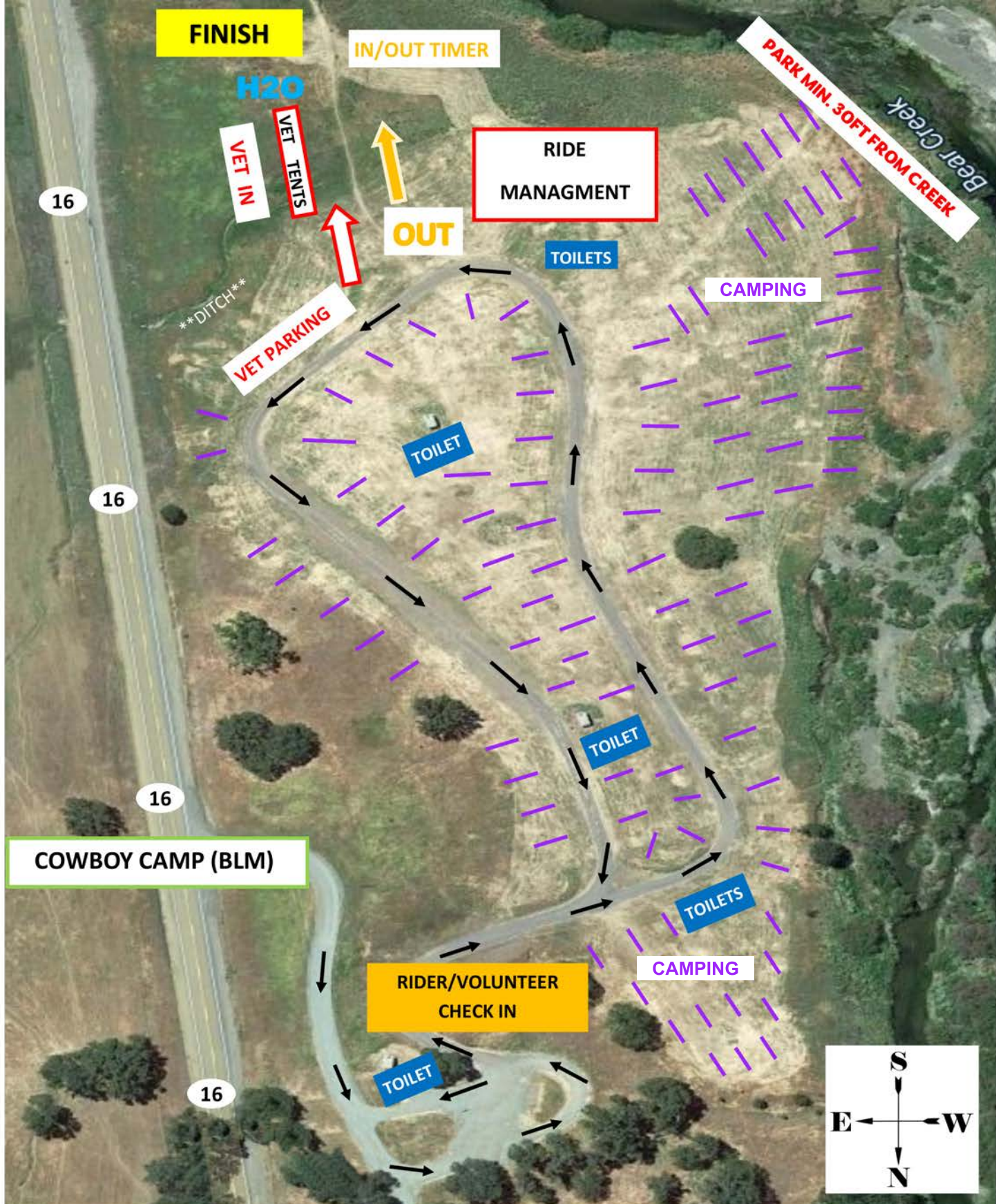
1. Provide us with your name, and we will present you with your volunteer T- shirt (please wear it on Saturday during the event, so we can find our volunteers).
2. You will also receive written instructions:
 - a. Describing your role in the ride on Saturday
 - b. Where you will report to help
 - c. When you should be there
 - d. A good idea of how long we will need your help
3. This information should not be new to you if you registered online as a volunteer. We will have sent an email confirming that you are ok with the assignment.



Camping Process

1. Congratulations, you are in at the Cache Creek Ridge Ride.
2. Park your rig using a pinwheel pattern—nose facing the gravel road you drove in on--not parallel to it. We have a sign demonstrating this at the entrance gate and in this digital packet.
3. Space your camp 25 feet from your neighbor's rig.
4. Set up your camp.
5. This is a dry camp, please bring your “human” drinking water with you to camp. Also, please haul as much horse drinking water with you as possible. We will refill troughs in camp but appreciate all you can do to help reduce the water runs to refill camp.
6. Please be respectful, kind and courteous.
7. Please spread manure and biodegradable waste (hay).
8. Bag your trash and haul it out with you.
9. Please keep dogs on leashes, horses on leads or safely contained.
10. We ask that you keep in mind that we are to LEAVE NO TRACE on all BLM property. Thank you!





— Park “PINWHEEL” style. **MAP IS NOT TO SCALE.** There is way more room for rigs than shown. This is simply an example of how to position your camps.



HIGH TAIL RANCH

BASE CAMP



CACHE CREEK RIDGE RIDE

Cowboy Wisdom (advice)

of the

Cache Creek Ridge Ride (rule)

Because rules are for a reason



- *Always look upstream before drinking the water.*
 - Likewise, thinking ahead... Trash goes into a bag that is tied off and that bag goes into the brick-red-colored trailer on your way out of camp. The trash travels 20 miles back to Williams, and we don't want to litter these beautiful hills all the way home.
- *You can't keep trouble from visitin', but you don't have to offer it a chair.*
 - We are still cutting down trees from the last wildfire. It wasn't our fault, but safety first; no campfires.
- *Man is the only critter who feels the need to label things weeds or flowers.*
 - Weed free or local hay only.
- *Good judgment comes from experience, and a lot of that comes from bad judgment*
 - Especially true if people have sponged out of the water. Do not sponge out of troughs.
- *If you get to thinkin' you're a person of some influence, try orderin' somebody else's dog around.*
 - All dogs must be on leashes at all times.
- *You are not being diplomatic just because you put **please** in front of "Shut the hell up."*
 - Be polite and cheery with all of the volunteers.
- *Going fast while you are lost won't help a bit.*
 - Use your brain. First think, would an idiot do this thing? If an idiot would, do not proceed doing that thing.
- *Don't run down narrow stairs if you're wearing spurs.*
 - Never, under any circumstances tell someone else where they're supposed to be! By the time you've "figured out" where they should be, you're off course. Pay attention to yourself and your ribbons only.
- *Wide open spaces don't breed no chatter boxes.*
 - Generators off by 9:30 pm. It's an early start on Saturday.
- *Sometimes you get, and sometimes you get got.*
 - We have seen rattlesnakes and lots of ticks. Rattlesnakes will get out of you way (most of the time), but use repellent for the ticks.



Always drink your whiskey with your gun hand to show your friendly intentions. Color don't matter if the horse don't trot ~~ that one's just for fun!

Intro Ride

Driving Directions to Base Camp

(BLM Property “Cowboy Camp”)

Cowboy Camp (Base Camp, Start and Finish)

From I-5

At Williams, take Hwy 20 West 18 miles to the intersection of Hwy 16. Turn left (South). Cowboy Camp will be on the right in about a mile.

From Capay Valley

After Rumsey, continue 18 miles North on Hwy 16. Cowboy Camp will be on the left. If you reach Hwy 20, you have gone too far.

Allow at least 1 ½ hours from Davis to reach Cowboy Camp



Pre-Ride Vet-In Process

*Intro Riders should wait for Saturday morning to vet in
Opens at 9 am on Saturday, May 3*

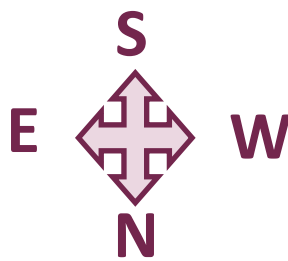
1. Take your rider card and your horse to the vet area.
2. If you are not standing with a “buddy horse”, maintain a distance of about 6 feet from the next horse’s tail. Do not crowd.
3. Present your horse to the vet while standing on the opposite side of the horse from the vet and his/her scribe.
4. Give your vet card to the scribe.
5. Retrieve your rider card after the vet completes the exam and the scribe has filled in the information from the vet’s exam.
6. Take your horse and rider card to the volunteer who will put your rider # on your horse with a cattle marker.
7. If your horse does not pass the pre ride vet exam, see ride management to process your “Did Not Start” status. This is **VERY IMPORTANT** as we need to keep track of our riders, and you will receive a refund of your entry fee less a \$30 processing fee.
8. You will have a great ride through what used to be working cattle ranch country. Be kind to all the people you see and enjoy the open air and a good traveling companion—your four-legged friend.



CACHE CREEK RIDGE RIDE

Pre-Ride Vet Exams & Numbering

Cowboy Camp (Base Camp)



In/Out Trail

In/Out Trail

Bear Creek

Horse Numbering

Riders EXIT

Trot Lanes

Trot Lanes

Vet Station Area

Saturday
Catered
Dinner

Ride
Management

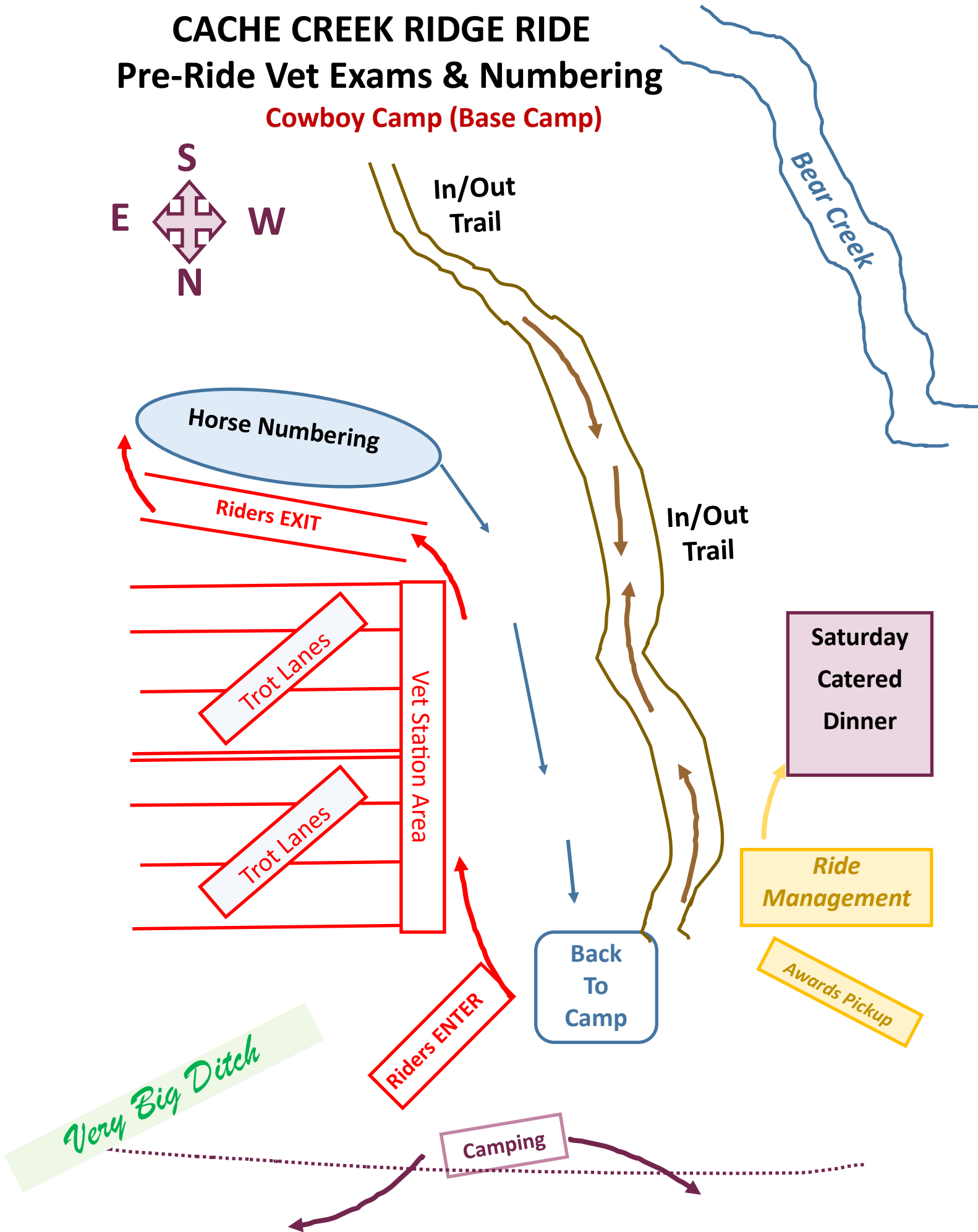
Awards Pickup

Back
To
Camp

Riders ENTER

Very Big Ditch

Camping



Intro Ride Post-Ride Process

You Have Crossed the Finish Line

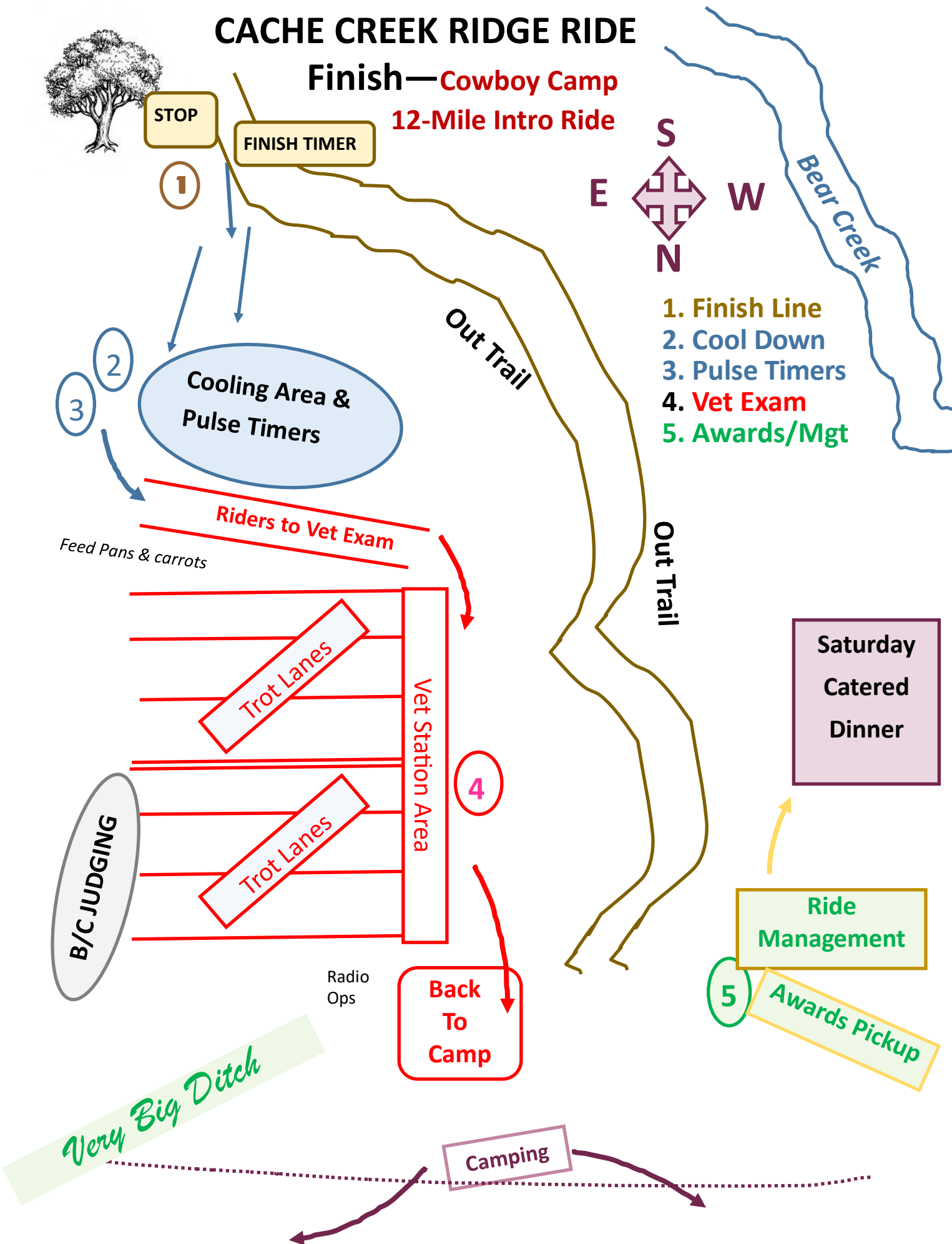
What Now?

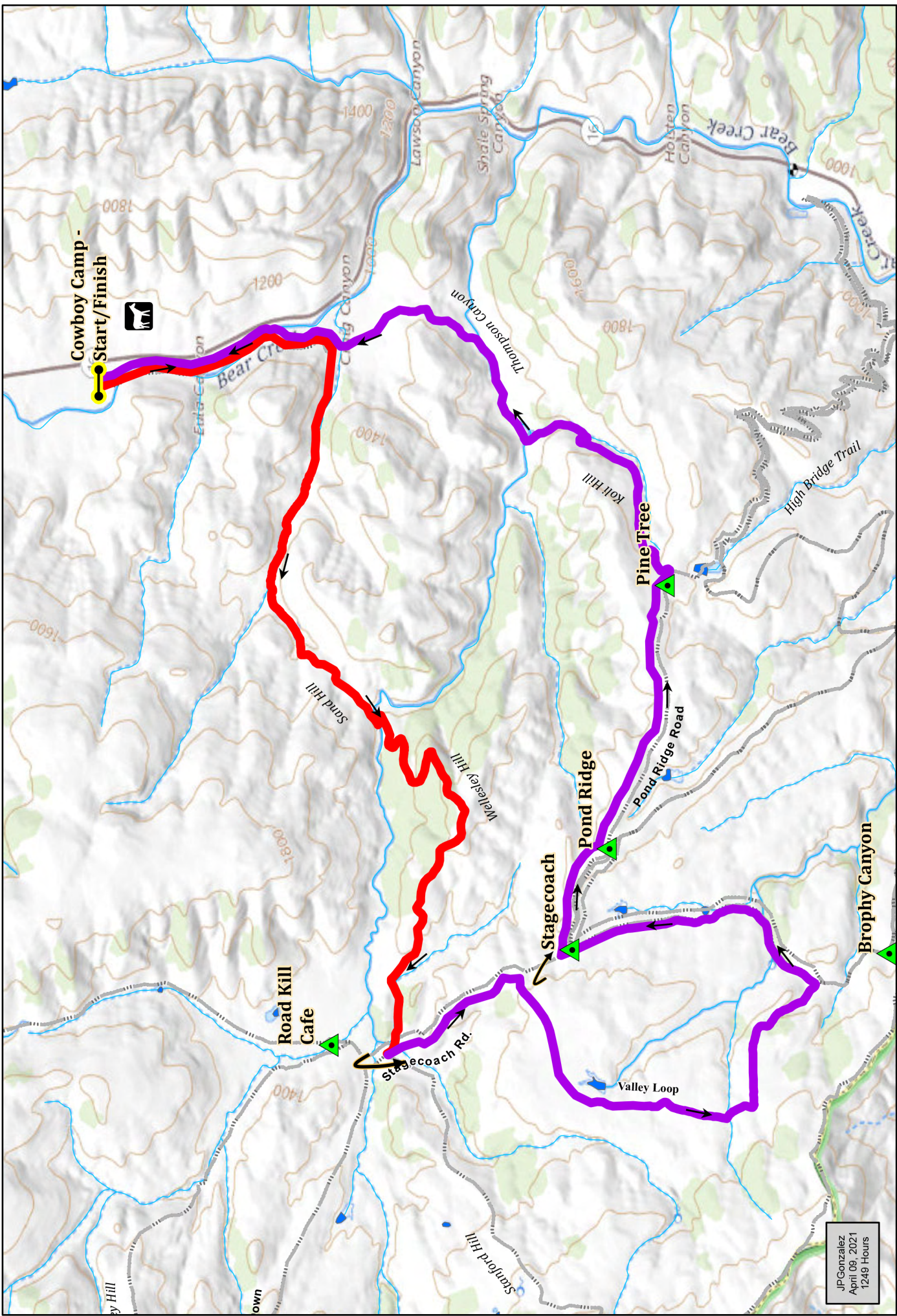
1. Once you complete the course and arrive at the “finish line,” the finish timer will write the time you crossed the finish line on your **green** rider card.
2. Next your horse must recover to the announced pulse criteria. Move up to the cooling area to cool your horse.
3. Please understand that the 25-mile and 50-mile riders (as well as Ride & Tie teams) may be completing finish exams at the same time you wish to have your horse vetted for a completion. We ask that you graciously allow them to move ahead of you if they are nearing their finish exam “cut off time.”
4. When the pulse is at criteria, call for a P & R person to take the pulse record it on your rider card. You have one hour from your finish time to present your horse for the post ride exam.
5. Have your vet card ready to present to the P & R volunteer and keep it available for the veterinarian’s scribe.
6. Present your horse to the veterinarian. As always try to stand on the opposite side of the horse from the vet and scribe at all times.
7. After the vet completes the post ride exam, the scribe will keep your card. Take a photo of it if you like.
8. If your horse passes the vet exam, go ahead and make your horse comfortable at your camp area. When you are ready, go to the awards table, so you can turn in your wristband and claim your award.
9. Complete your evaluation form and turn it in to receive your “post ride” food. You have a choice of a deli sandwich (available starting at 11 am) or a chicken plate (served from 2:30 -6:30 pm).
10. Congratulations! We hope you had a great experience at the CCRR!



CACHE CREEK RIDGE RIDE

Finish—Cowboy Camp
12-Mile Intro Ride





Cache Creek Ridge Ride
12 Mile Trail
Intro Course

JP Gonzalez
April 09, 2021
1249 Hours

Legend

Red	Start/Finish	Navigation arrows
Purple	Check point	

Vet Check

Caution sharp turn

50 mile route

Miles

0 0.5 1

N
W E S